

Folding and sliding hardware systems

Glass/Metal



Welcome

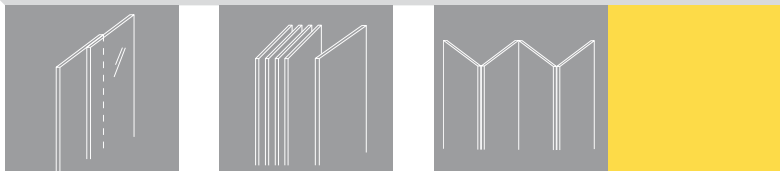
About Hawa AG

Sliding, pivoting and folding hardware has been our business since 1965. And our customers have always found fascinating applications for that hardware. Altogether, it has made us a name of international repute for glass/metal and wood architectural hardware, and hardware for wooden furniture. We – along with our customers – settle for nothing less than Swiss quality. Despite exporting over 80% of our production, we continue to produce our hardware here in Mettmensstetten. That is largely due to our business philosophy, which is still based on typically Swiss values like precision, safety and durability.

About this brochure

Defining and optimising spaces, solving problems, saving time – our glass/metal hardware carries an impact far beyond its sliding or folding action. This brochure is designed to convey impressions and provide inspiration for the exciting and varied possibilities and opportunities that our products offer. Should you want more detailed information about particular hardware, or if you have a specific problem, then please contact us – we will be happy to help.

Sliding from page 4
Stacking from page 14
Folding from page 26



Contents



Page 4/5

HAWA-Puro 100–150
HAWA-Purolino 80



Page 6/7

HAWA-Junior 40–160/GP



Page 8/9

HAWA-Junior 40–80/GL



Page 10/11

HAWA-Junior 80–250/G
HAWA-Telescopic und Symmetric 80/G



Page 12/13

HAWA-Silenta 150/GX
HAWA-Ordena 70



Page 14/15

HAWA-Aperto 60/GL



Seite 16/17

HAWA-Variotec 150/GV



Page 18/19

HAWA-Variotec 150/GR



Page 20/21

HAWA-Shopfront 400/G



Page 22/23

HAWA-Cornertec 150/GV



Page 24/25

HAWA-Motus 150/GV-matic



Page 26/27

HAWA-Variofold 80/GV
HAWA-Centerfold 80/GV



Page 28–30

References

For floor-to-ceiling, all-glass sliding doors with concealed suspension

HAWA-Puro 100–150



The principle

Designing and partitioning rooms with glass is a pure joy with HAWA-Puro 100–150. Its concealed suspension and ceiling-integrated top track leave no visible sign of the sliding hardware. This leaves all the more room to set the stage for the fascinating medium glass, they move so smoothly and quietly. All of these factors make it predestined for applications in representative public and private rooms. And its convenience and ease of installation are further reasons as to why the HAWA-Puro 100–150 is held in high regard not only by design purists.

The benefits

- Best running properties and a long lifetime.
- Purist design solution thanks to technology completely integrated into the top track.
- Ceiling-flush top tracks, fully integrated in concrete or suspended light-weight ceilings or surface mounted.
- Additional profiles, removable from below, for use as covers and for integrating stationary glass elements.
- Patent-pending wedge suspension for rapid height adjustment and trouble-free installation.
- High degree of operational safety thanks to form-fitting, totally stable connections between hardware and glass.

Technical specifications

Door weight

up to 100, 150 kg (220, 330 lbs.)

Glass thickness of sliding door

ESG 8/10/12/12,7 mm ($\frac{5}{16}$ / $\frac{13}{32}$ / $\frac{15}{32}$ / $\frac{1}{2}$ ")

VSG 8–13 mm ($\frac{5}{16}$ – $\frac{17}{32}$ ")

Glass thickness for stationary glass

ESG/ VSG 10–12 mm ($\frac{13}{32}$ – $\frac{15}{32}$ ")

with silicone up to 13 mm ($\frac{17}{32}$ ")

Trolleys

HAWA-Puro 100 4 rollers

HAWA-Puro 150 6 rollers



Increased safety and versatile design options thanks to laminated safety glass (VSG).

For all-glass sliding doors running parallel to the wall

HAWA-Purolino 80

The principle

HAWA-Purolino 80 plays to its strengths out of sight. This is because every hardware component is integrated in the top track. These top tracks come in a plain anodised or in a stainless steel effect finish to suit your requirements and are as easy to fit to a wall as they are to mount on or even integrate into a ceiling. As invisible as the HAWA-Purolino 80 is, its qualities are all the more visible: highest possible transparency for your glass designs, outstanding running smoothness combined with minimum rolling resistance, face cover plates in anthracite or die-cast zinc in a top track look. Plus many more features that make the HAWA-Purolino 80 a ground-breaking solution for numerous applications in upmarket residential and hotel architecture.

The benefits

- Design hardware with suspension fully integrated in the top track for complete transparency.
- Top track available in a plain anodised or a stainless steel effect finish for surface mounting on walls and ceilings or integrated into the ceiling.
- Smooth-running, long-lasting trolleys with high-quality ball bearing technology and plastic-coated steel rollers
- Patent-pending wedge suspension for rapid height adjustment and trouble-free installation.
- Ceiling-integrated top tracks are accessible from below without removing any ceiling elements.
- Form-fitting connections between hardware and glass (tempered or laminated safety glass possible) provide high operational safety.
- Point-fixing and rattle-proof two-component floor guide makes it easy to install doors and prevents any rattling caused by draughts.

Technical specifications

Max. door weight	80 kg (176 lbs.)
Min. Door width	700 mm (2'3 ⁹ / ₁₆ ")
Glass thickness	
ESG	8/10/12/12,7 mm (⁵ / ₁₆ " / ¹³ / ₃₂ " / ¹⁵ / ₃₂ " / ¹ / ₂ ")
VSG	8 – 13 mm (⁵ / ₁₆ " – ¹⁷ / ₃₂ ")
Height adjustable	± 3 mm (¹ / ₈ ")



Sliding glass door elegance with unobtrusive point suspension

HAWA-Junior 40 – 160/GP



An unqualified success thanks to virtually invisible hardware.

The principle

HAWA-Junior 40 – 160/GP is the benchmark reference for sliding glass door hardware. Unobtrusive point suspension leaves the spotlight firmly on the visual qualities of the glass architecture itself. For the final touch, there is a wide range of cover caps in many looks: rounded or square, finished in stainless steel effect, chrome, brass, or plain for painting in custom colours. Unobtrusive means quiet as well, with virtually silent running and a rattle-proof bottom guide that effectively stops vibration.



Choice of rounded or square cover caps.



The benefits

- High-quality, near-noiseless sliding mechanism, proven in thousands of installations.
- High-end design with rounded or square cover plates available in stainless steel, chrome or brass finishes, or plain for custom painting.
- Easy operation thanks to track stop with adjustable retainer for various door weights.
- Panels fit from the interior, for break-in resistant top suspension.
- Rattle-proof bottom guide prevents sliding doors from rattling.
- Extensive accessory range: like the HAWA-Toplock with square cover plates, or the clever HAWA-Junior angled profile, for side fixing to walls without concealment covers.
- Both toughened safety glass (ESG) and laminated safety glass (VSG) can be used.



Technical specifications

Door weight
up to 40, 80, 120, 160 kg
(88, 176, 264, 352 lbs.)

Glass thickness sliding door
ESG 8/10/12/12,7 mm ($\frac{5}{16}$ "/ $\frac{13}{32}$ "/ $\frac{15}{32}$ "/ $\frac{1}{2}$ "")
VSG 8,7 – 12,7 mm ($\frac{11}{32}$ "/ $\frac{1}{2}$ "")

Glass thickness stationary glass
ESG/VSG 10 – 12 mm ($\frac{13}{32}$ "/ $\frac{15}{32}$ "")



HAWA-Toplock combines appealing aesthetics with solid security.



Draughts, a problem vanishes in thin air: The vertical sealing profile takes a stand against draught.

HAWA-Junior 40–80/GL

The principle

The appeal of HAWA-Junior 40–80/GL lies in its blend of traditional HAWA expertise in sliding engineering design, and up-to-the-minute good looks. With cover plates, top tracks and angle profiles available in a choice of plain anodised or stainless steel effect finishes, the latest model in the Junior line will blend in with even the trendiest settings. The linear styling also contains clever design: the glass retainer profiles along the top edge of the doors disappear behind a sleek, continuous cover. At floor level, a rattle-proof guide keeps things running quietly. And HAWA quality throughout makes for excellent running characteristics, great value, straightforward installation and ease of use.

The benefits

- High-quality, near-noiseless sliding mechanism, proven in thousands of installations.
- High-end design with cover plates, top tracks and angle profiles available in stainless steel effect or plain anodised finishes.
- Extensive range of accessories, like the HAWA-Toplock with rectangular cover plates, or the clever HAWA-Junior angled profile, for side fixing to walls without concealment covers.
- Easy operation thanks to track stop with adjustable retainer for various door weights.
- Aluminium covers are a simple clip-on fit.
- Rattle-proof bottom guide prevents sliding doors from rattling.
- Strong safety thanks to dry glazing system with flush glass fixings.
- Vertical sealing profile takes a stand against draught.



The perfect wall junction for an all-glass sliding door with unprotected edge.

Technical specifications

Door weight

up to 40, 80 kg (88/176 lbs.)

Door width 500–1200 mm

(1'7 ¹¹/₁₆"–3'11 ¹/₄"

Glass thickness sliding door

ESG 8/9.5/10 mm (⁵/₁₆"/³/₈"/¹³/₃₂"

Glass thickness stationary glass

ESG/VSG 10–12 mm (¹³/₃₂"/¹⁵/₃₂"



Cover plates and angled profile for side fixing to walls also available in contemporary stainless steel effect.



New profile with clean lines:
HAWA-Junior 40–80/GL
fits in perfectly with modern
interior design.

For robust all-glass doors

HAWA-Junior 80 – 250/G



The benefits

- Elegant, adaptable profile design with invisibly integrated technology.
- Quiet running properties and a long life thanks to high-quality plastic rollers and plain anodised top tracks.
- Track stops with adjustable retention force for greater operating convenience.
- Discreet, point-fixing floor guide or stable, two-point guiding in a floor-fitted track, depending on operational requirements.
- High operational safety thanks to form-fitting glass connections.
- Various accessories available.

The principle

Even heavy-weight doors smoothly follow their intended course thanks to high-quality HAWA-Junior technology, tried and tested a millionfold around the world. HAWA-Junior 80–250/G accommodates doors weighing up to 250 kg (550 lbs.) with inimitable elegance. Technically perfect room partitions with aesthetic appeal are now possible in virtually any situation – in shop-fitting and gastronomy, in office blocks, banks and private buildings. All the more so, as this hardware with its unadorned, filigree profile and invisible technology not only has visual appeal but also sets new standards thanks to impressively quiet running properties.

Technical specifications

HAWA-Junior 80–160/G
Door weight up to 80,120,160 kg
(176, 264, 352 lbs.)
Glass thickness 8–16 mm ($\frac{5}{16}$ " – $\frac{5}{8}$ ")
Height adjustable ± 3 mm ($\frac{1}{8}$ ")

HAWA-Junior 250/G
Max. door weight 250 kg
(550 lbs.)
Glass thickness 8–16 mm ($\frac{5}{16}$ " – $\frac{5}{8}$ ")
Height adjustable ± 5 mm ($\frac{7}{32}$ ")

For simultaneously sliding of two glass doors

HAWA-Telescopic 80/G

The principle

Space-savily easy: HAWA-Telescopic 80/G enables you to simultaneously slide two glass doors telescopically with one movement wherever there is not enough room for one wide door. They are connected via a toothed belt on rollers and a fastening for the toothed belt.



Technical specifications

Max. door weight	80 kg (176 lbs.)
Door width	500–1000 mm (1'7 ¹¹ / ₁₆ " – 3'3 ³ / ₈ ")
Max. door height	2600 mm (8'6 ³ / ₈ ")
Glass thickness	8–16 mm (⁵ / ₁₆ " – ⁵ / ₈ ")
Height adjustable	± 2 mm (³ / ₃₂ ")

The benefits

- Simultaneous, spacesaving sliding of glass doors weighing up to 80 kg (176 lbs.) with smooth and quiet running properties.
- Reliable system based on HAWA-Junior technology, proven millionfold around the globe.
- Long lifetime thanks to high-quality plastic rollers, fibreglass-reinforced toothed belt and maintenance-free technology.
- A continuous floor guide track (optional) provides high rigidity.

For two symmetrically opening sliding glass doors

HAWA-Symmetric 80/G

The principle

HAWA-Symmetric 80/G connects two sliding glass doors via a fibreglass-reinforced toothed belt on deflection rollers. The system makes it easy to open and close doors symmetrically. Absolutely maintenance-free, extremely smooth running properties and no visible floor guides.

The benefits

- Opens and closes two doors symmetrically.
- High-quality trolleys enable easy sliding even with just one hand.
- Fibreglass-reinforced toothed belts guarantee high tear resistance and minimum stretch.
- Easy installation: insert doors and attach toothed belt from one side.
- A continuous floor guide track (optional) provides high stability.
- Elegant glass retainer profiles, available untreated and plain anodised.



Technical specifications

Max. door weight	80 kg (176 lbs.)
Glass thickness	8–16 mm (⁵ / ₁₆ " – ⁵ / ₈ ")
Height adjustable	± 3 mm (¹ / ₈ ")

For upscale all-glass sliding doors with corner suspension

HAWA-Silenta 150/GX



The principle

HAWA-Silenta 150/GX is a high-performance all-glass sliding hardware system with corner suspension. It moves panels up to 150 kg (330 lbs.) quietly and with astonishing ease, thanks to 2-point guides in the bottom channel.

While the room remains large and transparent, the hardware stays discreetly in the background: all components integrate invisibly in the corner fixing, according to the principle: as much glass as possible, with a minimum of obtrusive hardware.

The benefits

- Aesthetic, flexible solution for transparent interior designs.
- Greater ease of operation thanks to two-point sliding guides in the bottom channel.
- No full-width profile – just small, elegant covers.
- Stylish top track with low installation height.
- Quiet, gentle running.
- Adapts to numerous situations and requirements, with various accessories available.
- Form and colour matched clip-on cover caps.
- Bar bolt lock in corner fitting for secure locking at floor level.

Round or angular cover caps available with various surface finishes.



As much glass as possible, with a minimum of obtrusive hardware.



Technical specifications

Max. door weight 150 kg (330 lbs.)

Max. door height 3600 mm (11'9^{3/4}")

Glass thickness

ESG 10/12/12.7 mm ($\frac{13}{32}$ / $\frac{15}{32}$ / $\frac{1}{2}$ ")

For full room-height partitions and walk-in cabinets

HAWA-Ordена 70

Technical specifications

Max. door weight 70 kg (154 lbs.)

Min. door width 600 mm (1'11 ⁵/₈")

Max. door height 2600 mm (8'6 ³/₈")

Glass thickness

ESG 8/10 mm (⁵/₁₆" / ¹³/₃₂")

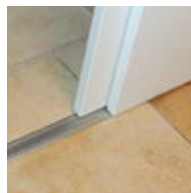
VSG 8,7 – 10,7 mm (¹¹/₃₂" / ⁷/₁₆")

Wooden door

thickness 30–40 mm (1 ³/₁₆" / 1 ¹⁹/₃₂")

The principle

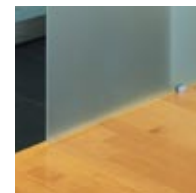
HAWA-Ordена 70 allows fit-anywhere designs for walk-in cabinets, but its continuous top track is also ideal for flexible room dividers in residential and office settings. The innovative sliding system dispenses with a frame, meaning much less work than usual for installers and many more possibilities for interior designers. Glass and wood sliding doors combine easily, or the system can be used with all-wood or all-glass panels, up to a maximum weight of 70 kilograms (154 lbs.). Hawa's proprietary and patented rattle-proof guide makes a bottom guide channel unnecessary in some situations.



Wood/wood combination.



Glass/glass combination.



Also with no bottom guide channel.



The perfect solution for walk-in cabinets.



The benefits

- Allows fit-anywhere designs for full room-height dividers.
- Frameless system for wood/wood, wood/glass and glass/glass panel combinations.
- Top running sliding system, impervious to dust and dirt.
- 4.5 mm (³/₁₆") high floor guide track for free-sliding or extra-wide sliding doors.
- Rattle-proof point bottom guides for an uninterrupted floor surface.
- No glass fixing parts visible.
- Easily retrofittable.
- Both toughened safety glass (ESG) and laminated safety glass (VSG) can be used.

For light-duty stackable glass sliding walls

HAWA-Aperto 60/GL

The principle

HAWA-Aperto 60/GL gives you completely new possibilities across many different settings. The way this sliding hardware system stacks the doors is a small miracle: up to nine light-duty glass panels tuck away simply and easily into the tiniest of spaces, either in parallel or at 90° to the sliding axis. Not only is the system cost-efficient and flexible; the clean, flush lines of its slim-line suspension and glass retainer profile appeal to even the most sophisticated designers. HAWA-Aperto 60/GL is also an enduring pleasure to operate, thanks to feather-light running and the typical feel of Hawa quality workmanship.

The benefits

- The first system for light-duty, stackable glass doors weighing up to 60 kg (132 lbs.).
- Stacks up to 9 doors of maximum width 1100 mm (3'7 $\frac{5}{16}$ ") in parallel, or 950 mm (3'1 $\frac{13}{32}$ ") at 90°.
- Simple installation and immense flexibility thanks to a modular, snap-fitting track system.
- Light-duty installations without a bottom guide track are possible.
- Aesthetic covers in stainless steel effect or plain anodised finishes clip-on after assembly.
- Corrosion-resistant materials make outdoor applications possible.
- Hawa AG undertakes planning for special installations involving changes of direction, curved top tracks, etc.



Up to nine glass door panels stack in a highly compact space.



The corrosion-resistant hardware is also suitable for outdoor installations.



An elegant solution for room-height partition walls as boundaries in a transparent ambience.

Technical specifications

Max. door weight 60 kg (132 lbs.)

Min. door width 500 mm (1'7 ¹¹/₁₆ ")

Max. door width

(90°) 950 mm (3'1 ¹³/₃₂ ")

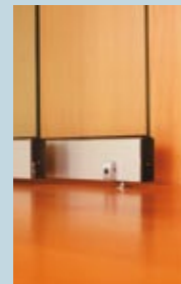
Max. door width

(parallel) 1100 mm (3'7 ⁵/₁₆ ")

Max. door height 2600 mm (8'6 ³/₈ ")

Glass thickness

ESG 8/9,5/10 mm (⁵/₁₆ " / ³/₈ " / ¹³/₃₂ ")



For elegant all-glass sliding walls with outstanding curve technology

HAWA-Variotec 150/GV

The principle

HAWA-Variotec 150/GV is the king of cornering among the sliding hardware systems. The modular, pluggable track system follows your blueprint around every twist and bend. Sliding revolving doors and sliding swinging doors can be integrated at any desired point. A complete installation is a pleasure to behold, with an aesthetically shaped glass retainer profile that blends in with any nearby colour. This sliding hardware system is balm for the ears, too – the high quality trolleys with two-point guide wheels are incredibly quiet-running.



Seen in shopping malls, banks and airports around the world.

The benefits

- Perfected cornering technology with a modular track system that allows changes of direction from 15 to 90°.
- Top tracks and bottom guide channels can be bent to customer specifications for unusual layouts.
- Trolleys with two-point guide wheels for excellent running characteristics for door weights from 70 to 150 kg (154 – 330 lbs.).
- All components install out of sight in the glass retainer profile.
- Installable with and without a bottom guide channel.
- Compact stacking area.
- Extensive accessories like seals, glass edge protection profiles, security locks, stationary glass, etc.



Technical specifications

Max. door weight 150 kg (330 lbs.)

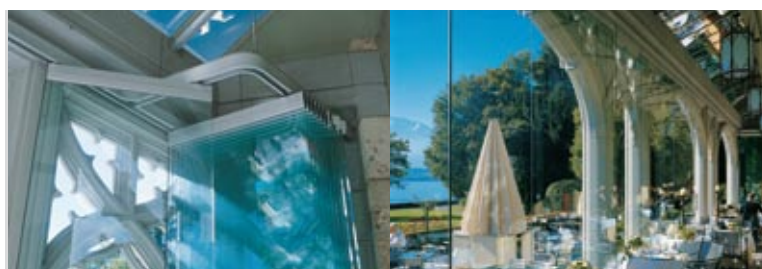
Max. door height 3500 mm (11'5 ¹³/₁₆")

Glass thickness

ESG 10/12/12,7 mm (¹³/₃₂" / ¹⁵/₃₂" / ¹/₂")



Bright corridors thanks to maximum glass with a minimum of obtrusive hardware.



Seating with an outdoor feel, even on cooler days.

For stable sliding glass walls with a frame profile

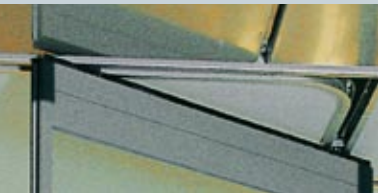
HAWA-Variotec 150/GR



Keeps doors weighing up to 150 kg (330 lbs.)
in perfect shape.

The principle

HAWA-Variotec 150/GR is the ideal hardware solution for installations that require enhanced security and rigidity. The elegant frame profile with just 24 mm ($\frac{15}{16}$ " visible width reduces glass bowing and makes it difficult to force open doors weighing up to 150 kg (330 lbs.). Yet despite such exemplary robustness, you still have the same gentle running characteristics, excellently engineered curve technique and unequalled flexibility that are the hallmarks of all HAWA-Variotec sliding hardware. And, draught-proof brush/rubber seals also make HAWA-Variotec 150/GR the solution of choice for effective isolation of air-conditioned rooms or unheated conservatories.

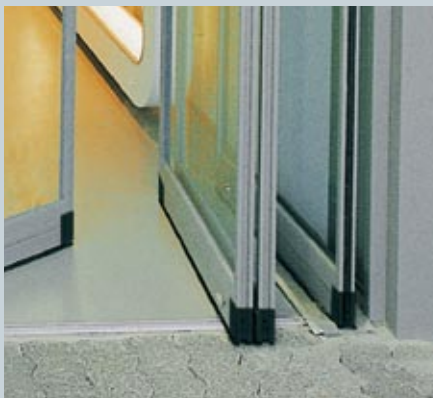


The inside concealment cover is a major plus for stacking areas that are open and visible.



The benefits

- Visually pleasing frame system with minimum visible width for doors up to 3.5 m (11'5 ¹³/₁₆") tall and weighing up to 150 kg (330 lbs.).
- Strong rigidity, enhanced security and protection for glass edges.
- Perfected cornering technology with a modular track system that allows changes of direction from 15 to 90°.
- No glass cut-outs needed.
- Top tracks and bottom guide channels can be bent to customer specifications for unusual layouts.
- Trolleys with two-point guide wheels for excellent running characteristics.
- Integrated brush/rubber seals to stop draughts.
- Can also be used with VSG up to 13 mm (¹⁷/₃₂").



Technical specifications

Max. door weight 150 kg (330 lbs.)

Max. door height 3500 mm (11'5 ¹³/₁₆")

Glass thickness

ESG 10/12/12,7 mm (¹³/₃₂" / ¹⁵/₃₂" / ¹/₂")

Glass thickness

VSG up to 13 mm (¹⁷/₃₂")

Secure locking with integrated deadbolt lock.

For heavy-duty all-glass sliding doors and walls

HAWA-Shopfront 400/G

The principle

HAWA-Shopfront 400/G is the popular and professional solution for heavy-duty all-glass sliding walls. Installed at thousands of sites all over the world, this hardware has the necessary quality and load-bearing capability to move doors up to 400kg (880 lbs.) during years of trouble-free service. Yet for all that performance, its looks are far from heavyweight. Perfectly airy and aesthetic designs are possible, bringing out the lightness of glass as an architectural material. A pivot door, either close to the stacking area or on the opposite side, is likewise no problem with this versatile hardware system.



Technical specifications

Max. door weight 400 kg (880 lbs.)

Max. door height 4000 mm (13'1 $\frac{1}{2}$ ")

Glass thickness

ESG 8–16 mm ($\frac{5}{8}$ "– $\frac{5}{8}$ ")



Compact stacking area.



The benefits

- Specially designed for heavy-duty doors that call for a high degree of quality and precision.
- Smooth running and highly durable.
- Compact stacking area.
- Various profiles available for glass thicknesses from 8 to 16 mm ($\frac{5}{16}''$ to $\frac{5}{8}''$).
- Pivot doors can be easily integrated.
- Plenty of flexibility for custom solutions.
- Integrated bar bolt lock for security.
- Hawa AG undertakes planning for special installations involving changes of direction, curved top tracks, etc.

Accomplished handling of heavy-duty doors up to 400 kg (880 lbs.) per panel.



For stackable glass sliding walls with corner suspension

HAWA-Cornertec 150/GV

The principle

HAWA-Cornertec 150/GV derives from the high technological standard and excellent running characteristics of HAWA-Variotec hardware systems and adds its own special plus-point: a corner suspension with a movable suspension point that gives you some particularly flexible design options. HAWA-Cornertec 150/GV backs up the visual qualities of your glass installation like no other hardware system on the market. It dispenses with a full-width suspension profile; all you need is a small, unobtrusive corner suspension, tucked away invisibly beneath an elegant cover plate. To harmonise with any setting, cover plates are available in four metallic finishes: matt or polished chrome, polished brass or stainless steel effect.



Maximum transparency with small corner suspensions instead of full-width profiles.

Permanent access thanks to the pivot door.



Technical specifications

Max. door weight 150 kg (330 lbs.)

Min. door width 750 mm (2'5 ¹⁷/₃₂ ")

Max. door height 3500 mm (11'5 ¹³/₁₆ ")

Glass thickness

ESG 10/12/12,7 mm (¹³/₃₂ " / ¹⁵/₃₂ " / ¹/₂ ")



The benefits

- Excellent running and cornering characteristics.
- Small corner suspension instead of full-width glass retainer profile.
- Avoids surface damage issues, because cover plates clip on after assembly is complete.
- Perfectly designed solution, with all components integrated out of sight in the corner fixings – even the security bar bolt lock.
- Form and colour matched clip-on cover caps.
- Corner suspension with flexible suspension points for custom floor plan designs.
- Standardised parking areas for efficient planning and execution.
- No cut-outs and no trimming of suspension and glass retainer profiles.
- Hawa AG undertakes planning for special installations involving changes of direction, curved top tracks, etc.



Round or angular cover caps available with various surface finishes.



For space-saving automatic sliding glass walls

HAWA-Motus 150/GV-matic



The principle

This completely new Hawa design for automatic hardware moves sliding glass walls of up to 30 metres (98'5 $\frac{1}{8}$ ") in width gently and quietly in high-quality top tracks. Its intelligent menu control sets new standards in user-friendliness with regard to both start-up and daily operation. And the groundbreaking hardware system is an unre-served pleasure for the eye, too, as every technical component is invisibly integrated into the top tracks. All the eye can see is an attractive glass retainer profile that emphasises the transpa-rency of your glass system instead of detracting from it.

Technical specifications

Max. door weight	150 kg (330 lbs)
Door width	850–1500 mm (2'9 $\frac{15}{32}$ "– 4'11 $\frac{1}{16}$ ")
Max. door height	3500 mm (11'5 $\frac{13}{16}$ ")
Glass thickness	
ESG	10/12/12,7 mm ($\frac{13}{32}$ " / $\frac{15}{32}$ " / $\frac{1}{2}$ ")
Max. no. of doors	20
Operating voltage	100–240 VAC 50–60 Hz



The benefits

- For up to 20 sliding glass doors with a maximum door weight of 150 kg (330 lbs).
- System widths of up to 30 metres (98'5 $\frac{1}{8}$ ").
- Various individual designs possible thanks to modular, pluggable top track system.
- Simple start-up thanks to menu-driven controls.
- No additional covers required as the drive technology is integrated into the top track.
- Intelligent drive, power supply and communications system for each door.
- Minimum space requirements in the parking area.
- Elegant design and secure automatic locking.
- Same appearance as HAWA-Variotec 150/GV profiles, therefore combinable with manual systems.
- Other door materials can be used in addition to glass.
- Very safe – system stops automatically when it encounters an obstacle.
- Retrospective automation easily possible.
- System is CE compliant.
- Extensive design and assembly documentation as well as guidelines and instructions for concept, installation and operation.



Invisible drive technology and minimum parking space requirements.



Just one finger to master operation: thanks to menu-driven controls.



For all-glass folding walls in rooms up to 6 m (19'8 $\frac{7}{32}$ ") wide

HAWA-Variofold 80/GV



Simple, convenient operation.

The principle

HAWA-Variofold 80/GV is a high-quality hardware system for all-glass folding-wall installations with an even number of panels, for partitioning rooms up to six metres (19'8 $\frac{7}{32}$ ") wide as individually and transparently as required. The hardware stacks up to six door panels; a pivoted access door may also be installed on the opposite side to the folding stack. Folding and sliding actions all have the typical HAWA quality feel, and as usual, there are no visible mechanical parts to interfere with the pleasing and even design: everything is built-in to the glass retainer profile. Planning is especially easy, since all panels can be made the same width.

The benefits

- Advanced folding mechanism and economical stacking for up to 6 all-glass door panels.
- Identical components for installations that open to the left or right, inwards or outwards.
- A separate pivoted access door can be added on the opposite side.
- Pleasing glass retainer profile completely conceals mechanical components.
- Closed door pairs are secured at the top by a folding/sliding door snapper with an integrated and individually adaptable retainer.
- Quiet, easy running.
- Simple, convenient operation.
- An integrated bar bolt lock can be fitted for security.

Technical specifications

Max. door weight 80 kg (176 lbs.)

Door width 400–900 mm

(1'3 $\frac{3}{4}$ " – 2'11 $\frac{7}{16}$ ")

Max. door height 2600 mm (8'6 $\frac{3}{8}$ ")

Glass thickness

ESG 10/12/12,7 mm ($\frac{13}{32}$ " / $\frac{15}{32}$ " / $\frac{1}{2}$ ")



For folding all-glass concertina walls without a floor guide

HAWA-Centerfold 80/GV

Technical specifications

Max. door weight 80 kg (176 lbs.)

Door width 500 – 900 mm
(1'7 ¹¹/₁₆" – 2'11 ⁷/₁₆"

Max. door height 2600 mm (8'6 ³/₈"

Glass thickness

ESG 10/12/12,7 mm (¹³/₃₂"/¹⁵/₃₂"/¹/₂"



The principle

HAWA-Centerfold 80/GV is a high-quality hardware system for all-glass concertina walls used to transparently partition rooms up to six metres wide. The special feature is the suspension point at the centre of the panel. You can install up to 6 panels without floor guide channels. In all other respects, you can count on the same strengths that make HAWA-Variofold something special in its class: immense flexibility, minimal space requirements, mechanical parts integrated out of sight in the profile, high-quality running and workmanship.



The benefits

- Advanced folding mechanism and economical stacking for up to 6 all-glass door panels.
- Installations up to 6 m (19'8 ⁷/₃₂") wide are possible without a floor guide channel.
- Identical components for installations that open to the left or right, inwards or outwards.
- A separate pivoted access door can be added on the opposite side.
- Closed door pairs are secured at the top by a folding/sliding door snapper with an integrated and individually adaptable retainer.
- An integrated bar bolt lock can be fitted for security.



Centre suspension point eliminates the need for a floor guide channel.

At home all over the world

In our increasingly globalised society, it is no longer surprising to be served the same beer in Singapore and Berlin, or to switch on identical TV sets in a Cape Town or San Francisco hotel room. Less obvious, but really no less surprising, is to find the same Hawa sliding hardware opening doors in the Petronas Twin Towers and at 30 St Mary Axe in London. Quality prevails everywhere. Look at the illustrations on this and the following pages to see just what good international company you are keeping by choosing Hawa solutions.



Schiphol Airport, Amsterdam, Netherlands.



Cultural and Congress Center, Lucerne, Switzerland.



30 St Mary Axe, London, England.



Emirates Twin Towers, Dubai, U.A.E



Silja Line «Serenade» and «Symphony» ocean-going ferries, Finland.



Ponggol Marina Main Restaurant, Singapore.



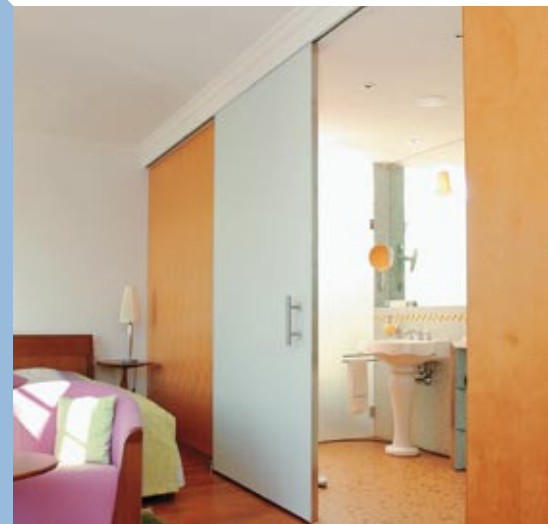
Schloss Schadau, Thun, Switzerland.

Extra-M publishing house,
Moscow, Russia.

Sliding, folding, stacking: naturally in wood, too.

Wood folding and sliding hardware

Doors, walls, panel fronts – wood is the answer. Especially when you put them together using Hawa sliding hardware. We have an off-the-shelf solution for virtually every application, whether you want especially light-action sliding doors, room dividers, or sliding walls that park away in the furthestmost corner of an apartment.



Sliding shutters

Folding/sliding and sliding shutters are an old idea that has come back into contemporary architectural vogue. Hawa was among those who influenced the trend from the start, producing an up-to-the-minute range of high-quality hardware that can be used to easily realise practically any sliding shutter concept, using either manual operation or automatic control. That is why top architects are among those choosing Hawa technology.

Further information:

Hawa AG
CH- 8932 Mettmenstetten
Switzerland
Tel. +41 44 767 91 91
Fax +41 44 767 91 78
www.hawa.ch

